

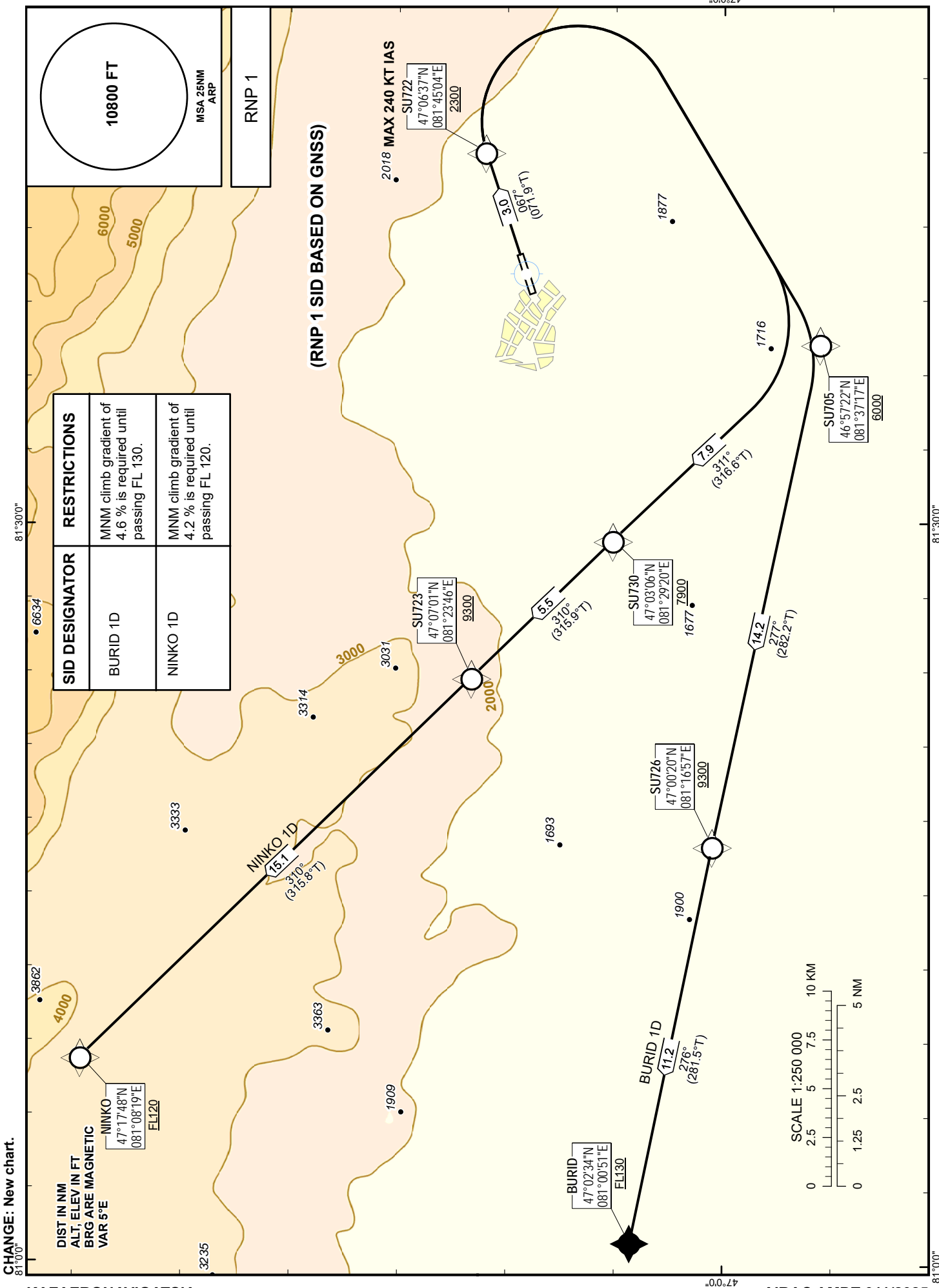
STANDARD DEPARTURE  
CHART- INSTRUMENT  
(SID) - ICAO

TRANSITION ALTITUDE  
10000 FT

URDZHAR TOWER 123.0

BURID 1D, NINKO 1D

URDZHAR  
RWY 07



TABULAR DESCRIPTION

BURID 1D RWY07											
Serial Number	Path Descriptor	Waypoint Identifier	Fly - over	Course M°(T°)	Magnetic Variation(°)	Distance (NM)	Turn Direction	Altitude (FT)	Speed (KT)	VPA (°)	Navigation Specification
010	CF	SU722	Y	067(071.9)	+5.4	3.0	-	+2300	-240	-	RNP 1
020	DF	SU705	-	-	+5.4	-	R	+6000	-	-	RNP 1
030	TF	SU726	-	277(282.2)	+5.4	14.2	-	+9300	-	-	RNP 1
040	TF	BURID	-	276(281.5)	+5.4	11.2	-	+FL130	-	-	RNP 1

NINKO 1D RWY07											
Serial Number	Path Descriptor	Waypoint Identifier	Fly - over	Course M°(T°)	Magnetic Variation(°)	Distance (NM)	Turn Direction	Altitude (FT)	Speed (KT)	VPA (°)	Navigation Specification
010	CF	SU722	Y	067(071.9)	+5.4	3.0	-	+2300	-240	-	RNP 1
020	DF	SU705	-	-	+5.4	-	R	+6000	-	-	RNP 1
030	TF	SU730	-	311(316.6)	+5.4	7.9	R	+7900	-	-	RNP 1
040	TF	SU723	-	310(315.9)	+5.4	5.5	-	+9300	-	-	RNP 1
050	TF	NINKO	-	310(315.8)	+5.4	15.1	-	+FL120	-	-	RNP 1

WAYPOINT COORDINATES

Waypoint Identifier	Coordinates	
BURID	470234.00N	0810051.00E
DER	470541.21N	0814053.71E
NINKO	471748.00N	0810819.00E
SU705	465722.17N	0813716.69E
SU722	470636.91N	0814504.37E
SU723	470700.98N	0812345.88E
SU726	470020.39N	0811657.49E
SU730	470306.28N	0812919.80E